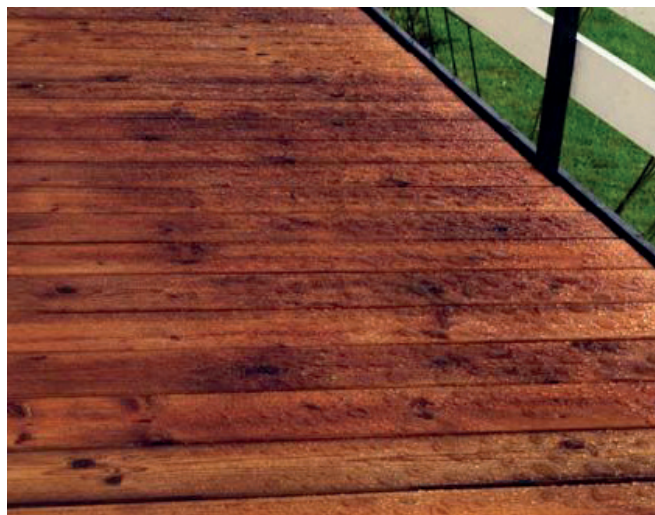


CLEVERCOAT WOOD FINISH

INTENDED USES:

CleverCOAT wood is a two-component, all season water repellent product for the protection of all types (unpainted by polymer paints) of natural wood, plywood, chip-board etc.

It is designed for protection of decks, terraces, wooden constructions, houses, cladding, fences, facades, garden furniture, saunas, flower pots, greenhouses etc.



PRODUCT DESCRIPTION:

It is a non-toxic, water-based protective coating prepared using nanotechnology and natural dyes. The main nano component is silica which penetrates into the wood and forms a durable permeable/breathable protective coating. The protective properties continue increasing after application and reach a maximum level in about a year. Protected surfaces effectively resist fungi, rot, algae, spores, ultraviolet irradiation, weathering, cracking etc. and damage caused by water ingress. The coating is harmless to animals and the environment but it provides good resistance to harmful insects etc.

CleverCOAT wood FINISH - the second product of two-component protection, is a milky color emulsion with nano-dispersed silica particles. Product is applied for waterproofing of the CleverCOAT wood PREMIER. Applying CleverCOAT wood FINISH without PREMIER will not form a strong protective coating and will peel off in a short time.

Please shake or agitate the product well before use. Apply with a brush or roller onto cleaned surface during dry weather when the temperature is above 5 ° C. Consumption is 100 g / m2. It is recommended to use protective gloves, glasses and a mask if there is a possibility of splashing. Drying time is from 4 to 5 hours. Do not pour any residue back into the canister. Avoid the contamination of watercourses and drains. After coating, clean the tools with water and detergents.

Keep container closed. Do not allow the product to freeze. Shelf life is 2 years from the manufactured date (on the packaging).

TECHNICAL INFORMATION:

Form	water silicone emulsion
Color	milky
Odor	weak specific odor
pH-value at 20°C	9.0 - 10.5
Viscosity, cSt	75 - 100
Freezing point, °C	between -2 to -5
Boiling point, °C	more 100
Volatile organic compound (VOC), g/l	kat A/f containing 0
Flash point	not determined
Flammability (solid, gaseous)	not determined
Oxidizing properties:	not determined
Vapor pressure:	as aqueous solutions
Dilution with water:	in any ratio

PRODUCT HAZARDS AND SAFETY INFORMATION:

See Material Safety Data Sheet for complete Health and Safety information.

ADDITIONAL DATA:

Product is prepared according to existing legislation European Union. Product has not volatile matter and holds the nano components tight inside its structure. Nano particles cannot be separated one from polymer mixture. It guarantees that nano-sized particles do not get "loose" and incur to human organism and harm our health and surrounding environment. Product waster

Lasting effect: up to 15 years depend from external environment.

PACKING OF THE NANOTECH CLEVERCOAT WOOD FINISH



Product is packed in 3kg plastic canisters.

Carton: 5 canisters

Carton size: 39cm x 28cm x 26cm

Carton's gross weight: 17.10kg

Pallet: 60 cartons/300 canisters

Pallet weight net/gross - 1026kg/1051kg

Pallet size: 100cm x 120cm x 175cm

SHIPPING AND EXPORT INFORMATION

Non-hazardous for any transportation.

Export HS code: 38249096



Nanoformula OÜ
 VAT no. EE100140543, reg. no.10045133
 Narva mnt.4, Voka, 41701, Estonia, Tel.:+372 39 71305, Fax: +372 39 71303
<http://www.nanoformula.eu>, email: info@nanoformula.eu